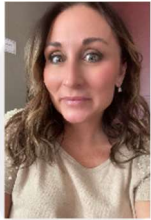


## Our BH Provider Relations Team - Nebraska



**Misty Ray, MBA**

*Provider Relations Director*

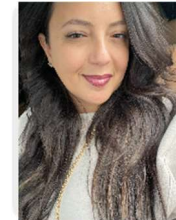
misty\_ray@optum.com



**Julie Sheppard**

*Senior Provider Relations Advocate*

julie\_sheppard@optum.com



**Jennifer Garcia**

*Provider Relations Advocate*

jennifer\_garcia1@optum.com



**Team Email:**

ohbs.centralregion@optum.com



**Team Fax:**

1-866-388-1710

**Douglas County and the below  
Provider Groups:**

CHI, Nebraska Health Partners,  
Indian Health Services, all FQHC's,  
Centerpointe

**All other counties and the below  
Provider Groups:**

Bryan Health