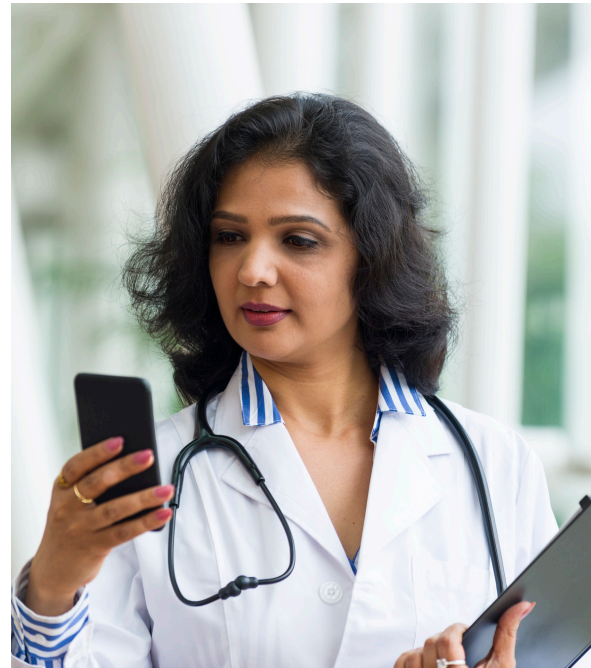


Learn more about how eConsults support you.

Q: What is AristaMD, and how does the program help providers?

AristaMD's eConsult platform is a physician-to-physician, asynchronous, telehealth solution that empowers primary care providers. The platform gives providers the ability to conduct electronic consults with a panel of on-demand board-certified specialists who will respond within 24 hours. eConsults are an invaluable tool in any primary care practice to manage your patients and ensure they get the timely, specialist-guided treatment they need. More than 70% of routine specialist referrals can be safely treated by primary care providers with the the guidance of specialty eConsults.



The AristaMD eConsult platform:

- Cost-effective alternative for patient face-to-face specialty visits (non-procedural, non-urgent, and not PT or OT)
- A tool to alleviate wait times for specialty care, allowing the patients to stay in the primary care setting
- Eliminates the need to travel to a specialty visit
- Validation of treatment plan and need to refer the patient
- Treatment questions or medication regimen confirmation
- Provides a second opinion

Q: What is AristaMD and how does the program help providers help patients?

As you are aware, for many patients, access to specialist care is a significant obstacle to receiving the best care. With wait times stretching weeks or months, long delays can compound care compliance and result in condition decline. Many specialist physicians are also out-of-network resulting in significant out-of-pocket costs for patients. And forgoing specialist care can result in significant gaps in care.

By utilizing eConsults, PCPs can send patient information such as medical histories, images, and test results, via a secure online platform, to board-certified specialists who will weigh in on cases remotely. Using eConsults from AristaMD, patients can receive specialist-backed treatment plans within 24 hours. Plus, eConsults are more affordable, bypass the need for patients to take time out of work or travel, and support primary care providers in delivering care through a completely virtual manner.



For more information or to request a demo, contact us at info@aristamd.com

858.750.4777
www.aristamd.com

Arista|MD

Q: How do eConsults save money?

More than \$75 billion is spent each year on specialist referral costs in the US.

- eConsults contribute to an 11-12% reduction in emergency department visits.
- 20-30% of routine specialist referrals are for clinical issues that can be safely treated by primary care providers (source: AristaMD internal data, 2018).
- The average specialist referral results in 3.4 specialist visits. eConsult referrals prevent unnecessary specialist visits, duplication of care, and network leakage.
- eConsults prevent fragmentation of care as the primary care provider remains in control of the patient's treatment plan.



Based on the average cost of specialist referral calculations and AristaMD's average in-person appointment replacement rate of over 70%, health plans could be saving \$3 million per year, per 100,000 patients.

Q: How do providers perform eConsults (i.e., process, turnaround time)?

We have two visual workflows detailing the eConsult process. One is a standard workflow, while the other incorporates a data extraction service (DES) performed by a team of trained RNs.

Both workflows are available at www.aristamd.com/workflows.

Q: What data does AristaMD collect from eConsults that will be shared with clinics and case managers?

The following data is collected and compiled into detailed, yet easy to follow, standard reporting dashboards:

- eConsult volume
- Efficacy (whether the eConsult replaced a visit and/or influenced the care plan for the patient)
- Primary care provider satisfaction

Visit www.aristamd.com/monthlyreport to view and download our sample monthly reporting package.

What AristaMD providers have to say:

“ Being able to use AristaMD for eConsults has been a game changer for our clinicians and patients. Clinicians have enhanced their knowledge to maximize their skill set as a primary care provider while saving patients the time and inconvenience it takes to go to a specialist's office. Even in those cases where a face to face with the specialist is still necessary, our clinicians can often initiate some treatments or order additional tests prior to the specialist visit based on the e-consultant's recommendations